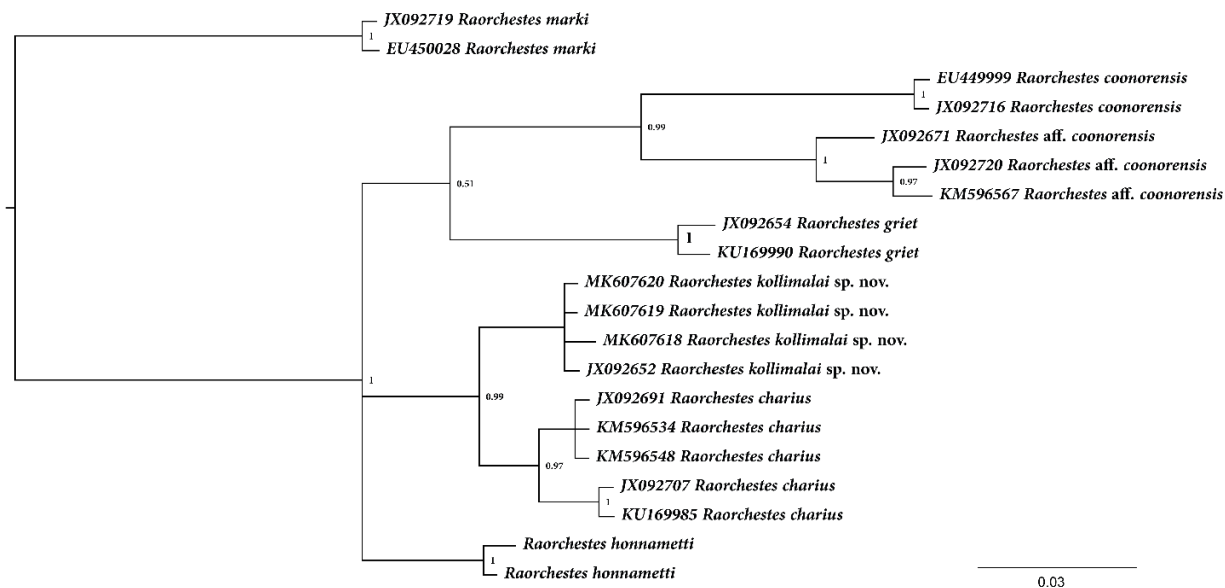


ERRATUM

An erratum for the “*Molecular analysis:*” (page 165), in the article “Gowande, G.G., S.R. Ganesh and Z.A. Mirza, 2020. A new cryptic species of bush frog (Amphibia: Anura: *Raorchestes*) from the Southern Eastern Ghats, India, 9 (2): 164–173 + pls. 49–50”:

“Bayesian Inference (Appendix III) was implemented in MyBayes 3.2.2 (Ronquist & Huelsenbeck 2003) and was run for 10 million generations....” must read as follows: “Bayesian Inference (Appendix I) was implemented in MyBayes 3.2.2 (Ronquist & Huelsenbeck 2003) and was run for 10 million generations...” [Note: The figure was missing in the original description, and is presented below]:

Appendix I. Bayesian Inference phylogeny of the members of the *Raorchestes charius* clade based on 16s rRNA gene; numbers at nodes represent Bayesian posterior probability.



An erratum for the “Comparison” (page 169), in the article “Gowande, G.G., S.R. Ganesh and Z.A. Mirza, 2020. A new cryptic species of bush frog (Amphibia: Anura: *Raorchestes*) from the Southern Eastern Ghats, India, 9 (2): 164–173 + pls. 49–50”:

“However, it can be differentiated by having narrower head, HW/SVL 0.31 (vs 0.34–0.36),...” should be read as follows: “However, it can be differentiated by having narrower head, HW/SVL 0.32–0.36 (vs 0.34–0.36),...”. [Note: the range of the two species overlaps and this character cannot be used to diagnose *R. kollimalai* and *R. charius*, and suggest removing “narrower head, HW/SVL 0.32–0.36 (vs 0.34–0.36)” from the comparison].

Therefore, the comparison must be read as follows:

“**Comparison.** *Raorchestes kollimalai* sp. nov. most closely resembles the allopatric *R. charius* of the Western Ghats, in external appearance, from which it is difficult to diagnose. However, it can be differentiated by having wider inter upper eyelid, IUE/SVL 0.14–0.16 (vs 0.11–0.13),...”

Erratum submitted: 19 December 2020

Erratum published: 27 May 2021

<https://doi.org/10.47605/tapro.v10i1.254>